

Douglas Johnson

National Demographics Corporation

CITY OF TULARE 2011 REDISTRICTING

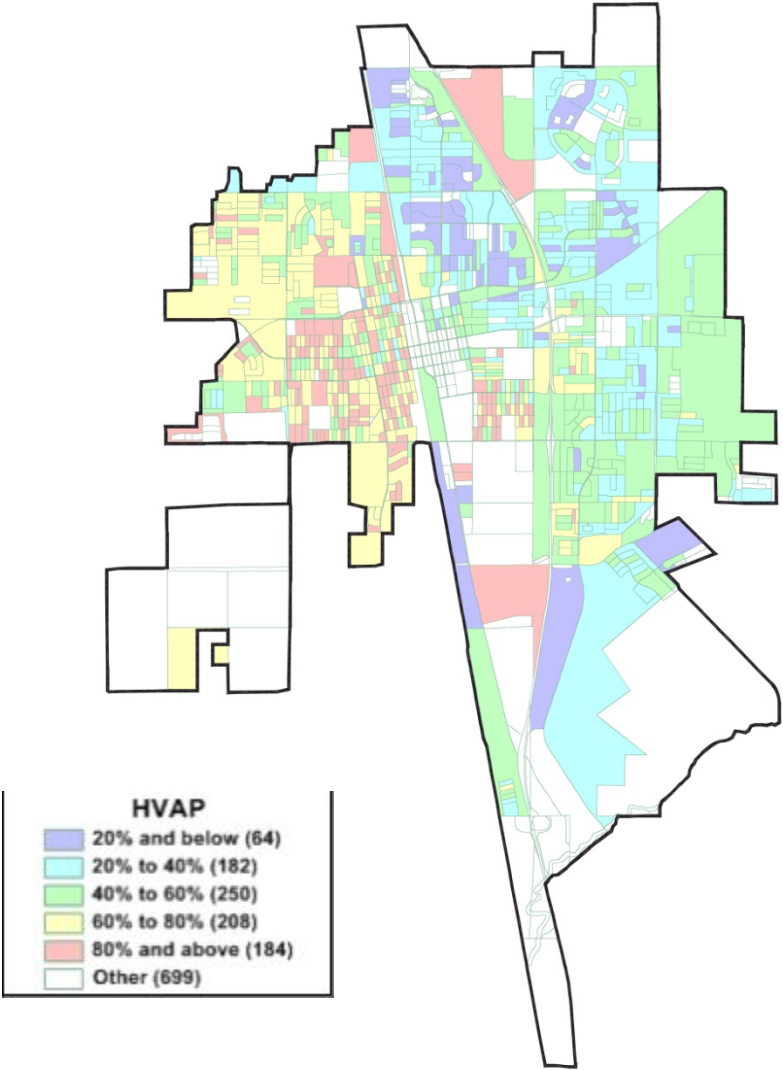
Current Demographics

Based on 2010 Census data and the American Community Survey:

- Population
 - ▣ 2010 Census total: **59,278**
 - 57.5% Hispanic
 - 34.7% Non-Hispanic white
 - 3.6% black
 - 34.7% growth since 2000
 - ▣ 2010 Census Voting Age Population
 - 51.2% Hispanic
 - 41.0% Non-Hispanic white
 - 3.7% black
- Other Data
 - ▣ Citizen Voting Age Population
 - From ACS: 39.6% Hispanic
 - From Census Special Tabulation: 37.0% Hispanic
 - ▣ Surname Registration
 - 37.1% Hispanic

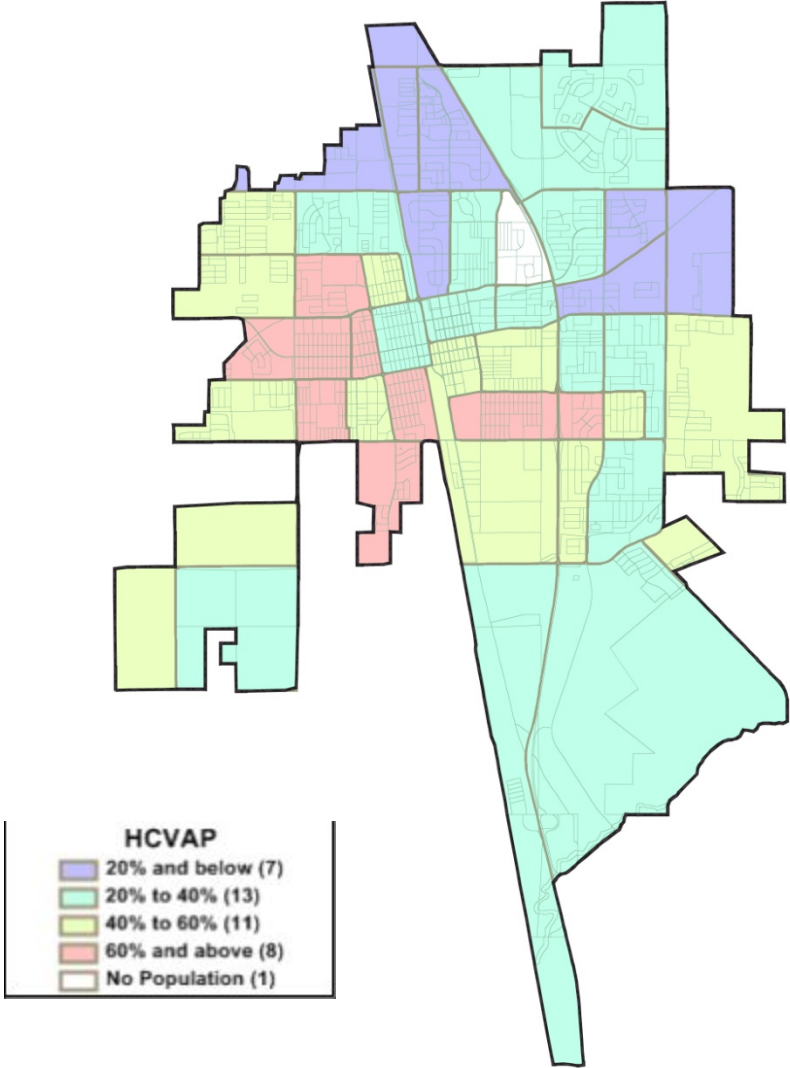
Hispanic/Latino Population

Voting Age Population

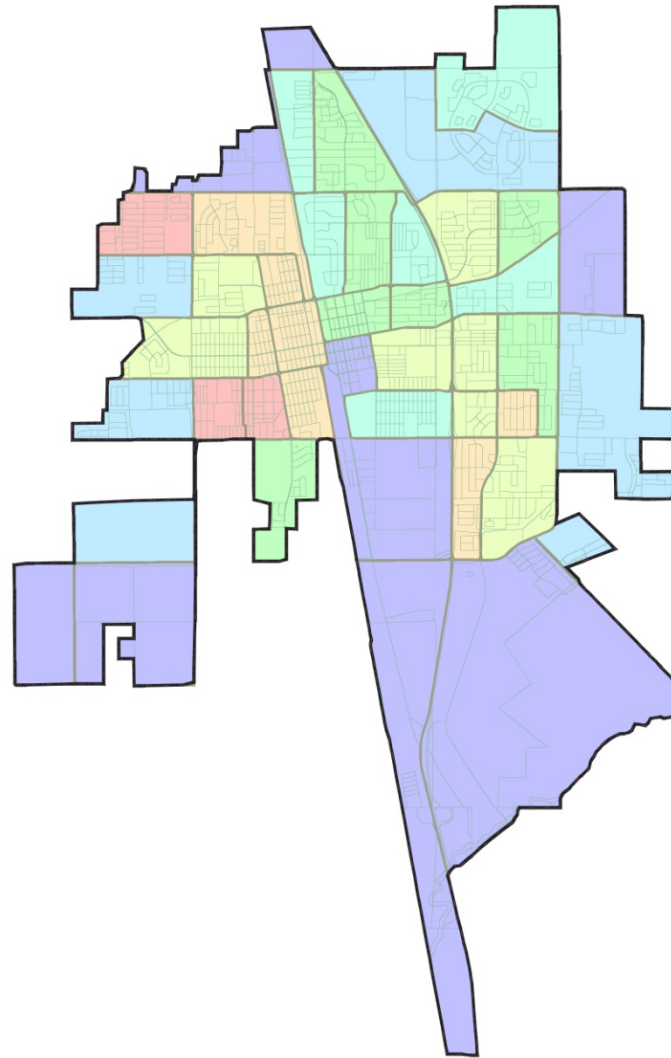
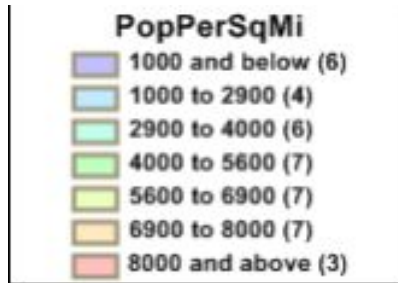


Hispanic/Latino Population

Citizen Voting Age Population



Population Density



Current Population Counts

Field	Population	Hispanic	NH DOJ Wht	NH DOJ Blk	NH DOJ Ind	NH DOJ Asn	NH DOJ Hwn	NH DOJ Oth	NH DOJ OthMR
Total	59,278	34,062	20,597	2,199	617	1,359	122	157	165

Field	18+ Pop	H18+ Pop	NH18+ Wht	NH18+ DOJ Blk	NH18+ DOJ Ind	NH18+ DOJ Asn	NH18+ DOJ Hwn	NH18+ DOJ Oth	NH18+ DOJ OthMR
Total	39,521	20,233	16,186	1,476	417	922	91	99	97

Abbreviations:

Dev. = Deviation

Hisp = Hispanic

NH = "Non-Hispanic"

Wht = White

Blk = Black / African American

Ind = Native American

Asn = Asian American

Haw or Hwn = Hawaiian and Pacific Islander

Oth = Other

OthMR or MR = Multi-Race

"DOJ" = Aggregated according to U.S. Department of Justice guidance

CVAP = Citizen Voting Age Population

Field	Special Tabulation									American Community Survey (ACS)								
	Total CVAP	Hisp CVAP	NH Wht CVAP	NH Blk CVAP	NH Asn CVAP	NH Ind CVAP	NH Hwn CVAP	NH MR CVAP	NH Oth CVAP	Total CVAP	Hisp CVAP	NH Wht CVAP	NH Blk CVAP	NH Asn CVAP	NH Ind CVAP	NH Hwn CVAP	NH MR CVAP	NH Oth CVAP
Total	36,768	13,588	19,724	2,052	697	187	15	485		35,452	14,030	17,680	2,388	760	310	18	764	5,113

Current Population Percentages

Field	Hispanic	NH Wht	NH DOJ Blk	NH DOJ Ind	NH DOJ Asn	NH DOJ Hwn	NH DOJ Oth
Total	57.5%	34.7%	3.7%	1.0%	2.3%	0.2%	0.3%

Field	H18+ Pop	NH18+ Wht	NH18+ DOJ Blk	NH18+ DOJ Ind	NH18+ DOJ Asn	NH18+ DOJ Hwn	NH18+ DOJ Oth
Total	51.2%	41.0%	3.7%	1.1%	2.3%	0.2%	0.3%

Abbreviations:
 Dev. = Deviation
 Hisp = Hispanic
 NH = "Non-Hispanic"
 Wht = White
 Blk = Black / African American
 Ind = Native American
 Asn = Asian American
 Haw or Hwn = Hawaiian and Pacific Islander
 Oth = Other
 OthMR or MR = Multi-Race
 "DOJ" = Aggregated according to U.S. Department of Justice guidance
 CVAP = Citizen Voting Age Population

	Special Tabulation							American Community Survey (ACS)							
Field	Hisp CVAP	NH Wht CVAP	NH Blk CVAP	NH Asn CVAP	NH Ind CVAP	NH Hwn CVAP	NH MR CVAP	Hisp CVAP	NH Wht CVAP	NH Blk CVAP	NH Asn CVAP	NH Ind CVAP	NH Hwn CVAP	NH MR CVAP	NH Oth CVAP
Total	37.0%	53.6%	5.6%	1.9%	0.5%	0.0%	1.3%	39.9%	49.9%	6.7%	2.1%	0.9%	0.1%	2.2%	14.4%

Rules: Federal Laws

- **Equal Population** among districts
 - Total population: not voting age population, citizens, or voters
 - Different for 2011: all deviations must be explained. Being within +/- 5 % is no longer enough. This is why NDC recommends all 2011 clients formally adopt criteria.
- **Federal Voting Rights Act**
 - Section 2 – Ensure equal power to elect candidates of choice
 - Section 5 – Avoid retrogression
 - No racial gerrymandering
- **California Voting Rights Act**
 - “An at-large method of election may not be imposed or applied in a manner that impairs the ability of a protected class to elect candidates of its choice or its ability to influence the outcome of an election, as a result of the dilution or the abridgment of the rights of voters who are members of a protected class.”

Federal Voting Rights Act



- **Requires “Protected Class” populations have an “equal opportunity to elect the candidates of their choice”**

- **No “packing”**
- **No “cracking”**

- **No racial gerrymandering allowed**
 - ▣ Focus on communities and neighborhoods, not race/ethnicity

- **Section 5** does not apply to city redistricting in Tulare

Rules: Traditional Criteria



Reasons identified and approved by the US Supreme Court as justifiable reasons for small population deviations:

- **Communities of interest**
- **Visible (Natural & man-made) boundaries**
 - Make it easy for residents of a district to understand its borders (and to engage their neighbors in precinct walking or other election activities)
- **Compactness & contiguity**
 - Also makes it easier for voters to understand their district's borders.
- **Continuity in office**
 - Redistricting, an administrative process, should not tell the voters they can no longer elect a candidate they have previously elected (which is what happens when two or more incumbents are “paired.”)
- **Population growth**
 - Growth is much less certain in 2011 than it was in 2011, so this is harder to justify than it was in 2001.
- **Preserve Core of existing districts**
 - Don't move voters around unless needed to achieve one of the other goals.

Process (1 of 3)



1. **Prepare**

- ▣ Conduct initial demographic analysis
- ▣ Adopt schedule
- ▣ Launch project website
- ▣ Create public participation kit (paper, excel and/or online)
- ▣ Adopt criteria
- ▣ Develop initial draft plans to jump-start discussion

Process (2 of 3)

2. Outreach

- Educate, engage and empower the public, including:
 - Individuals
 - Community Groups, including “protected class”-focused organizations
 - The media
- What are your community’s “communities of interest”?
 - Which want to be united? Which want to be divided?
- How well do the current and draft plans meet those goals?
- Participation kits take the public input beyond just “yes” and “no”



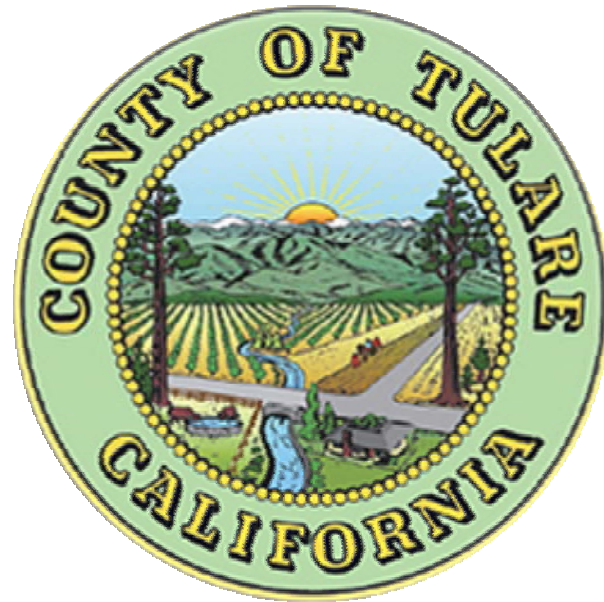
Process (3 of 3)

3. **Decide**

- ▣ Plan debate and adoption

4. **Implement**

- ▣ Plan implementation
 - Coordinated with the County Registrar



Tools (1 of 2)

Traditional Redistricting Tools

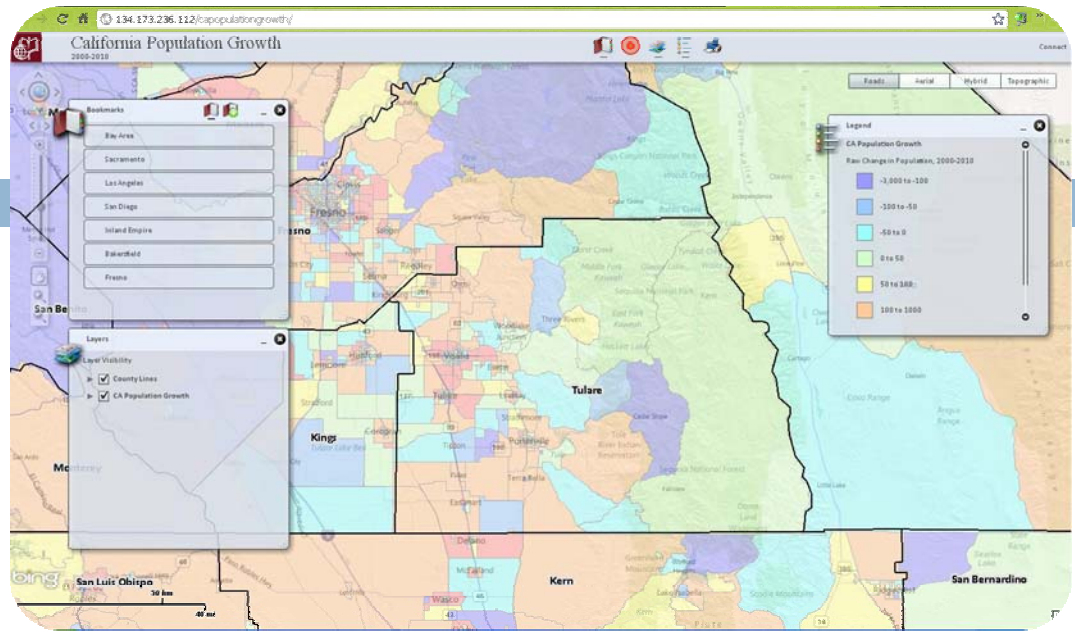
1. 2010 Census data
2. Project website
3. Media & community education
4. GIS software
5. Information on redistricting, the Voting Rights Act, and how the public can participate
6. Provide paper & Excel public participation kits
7. Email address for public questions and public comment

United States™
Census
2010

Tools (2 of 2)

New Tools for 2011

1. American Community Survey data
2. Local GIS data
 - ▣ Zoning, homeowner associations, housing developments, neighborhood associations, key facilities, future development areas, school attendance areas, aerial imagery, etc.



3. Live, interactive maps of plans
4. Google Maps and Google Earth plan files
5. Online redistricting

Schedule



Proposed Schedule:

- Late May, 2011 Council workshop
- Early June, 2011 Council consideration of criteria
- June / July / early Aug. Public hearings (one in each district)
- August 2011 Council workshop
- September 2011 Council review and plan adoption
- On/Before October 1 Submittal to County Elections